

THE MARKETPLACE AT CALIMESA

CALIMESA, CALIFORNIA 92223

Stater Bros. Markets Anchored Shopping Center
Shops Available



**LEWIS
RETAIL CENTERS**

NICK WIRICK

951.669.1002

nick.wirick@srsre.com

DRE# 01304661

MIRANDA MONTGOMERY

951.669.1004

miranda.montgomery@srsre.com

DRE# 02087985

JEFF STANLEY

951.276.3612

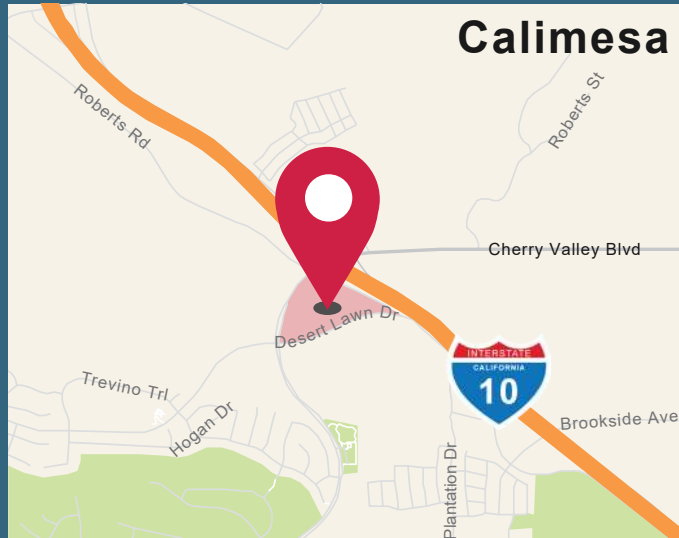
jstanley@leeriverside.com

DRE# 01016436

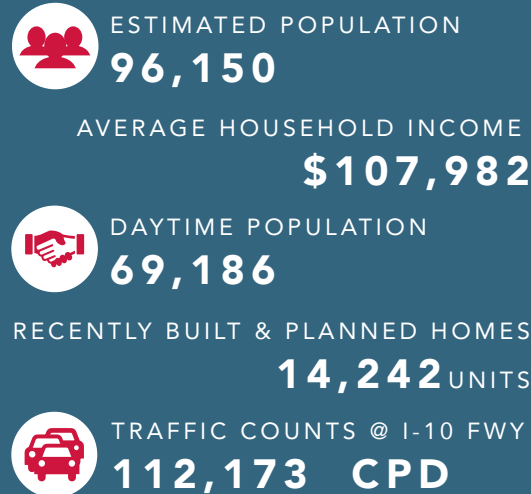
OVERVIEW

- ±3,022 SF shop space available
- Average annual household income in excess of \$120,000 within 3 miles
- Freeway visibility with traffic counts exceeding 112,173 cars per day on the Interstate 10
- Lack of competition gives a tenant the opportunity to service the trade area unencumbered by competitors

NEWLY COMPLETED!



5 MILE DEMOGRAPHICS



JOIN:



**LEWIS
RETAIL CENTERS**

THE MARKETPLACE AT CALIMESA - Calimesa, California 92223

© SRS Real Estate Partners & Lee & Associates Commercial Real Estate Services, Inc. The information presented was obtained from sources deemed reliable; however SRS Real Estate Partners & Lee & Associates Commercial Real Estate Services, Inc. does not guarantee its completeness or accuracy.

SITE PLAN



AVAILABILITIES

SUITE	SF
SUITE 330	3,022 SF
FUTURE SHOPS 5	±1,260 - ±8,149

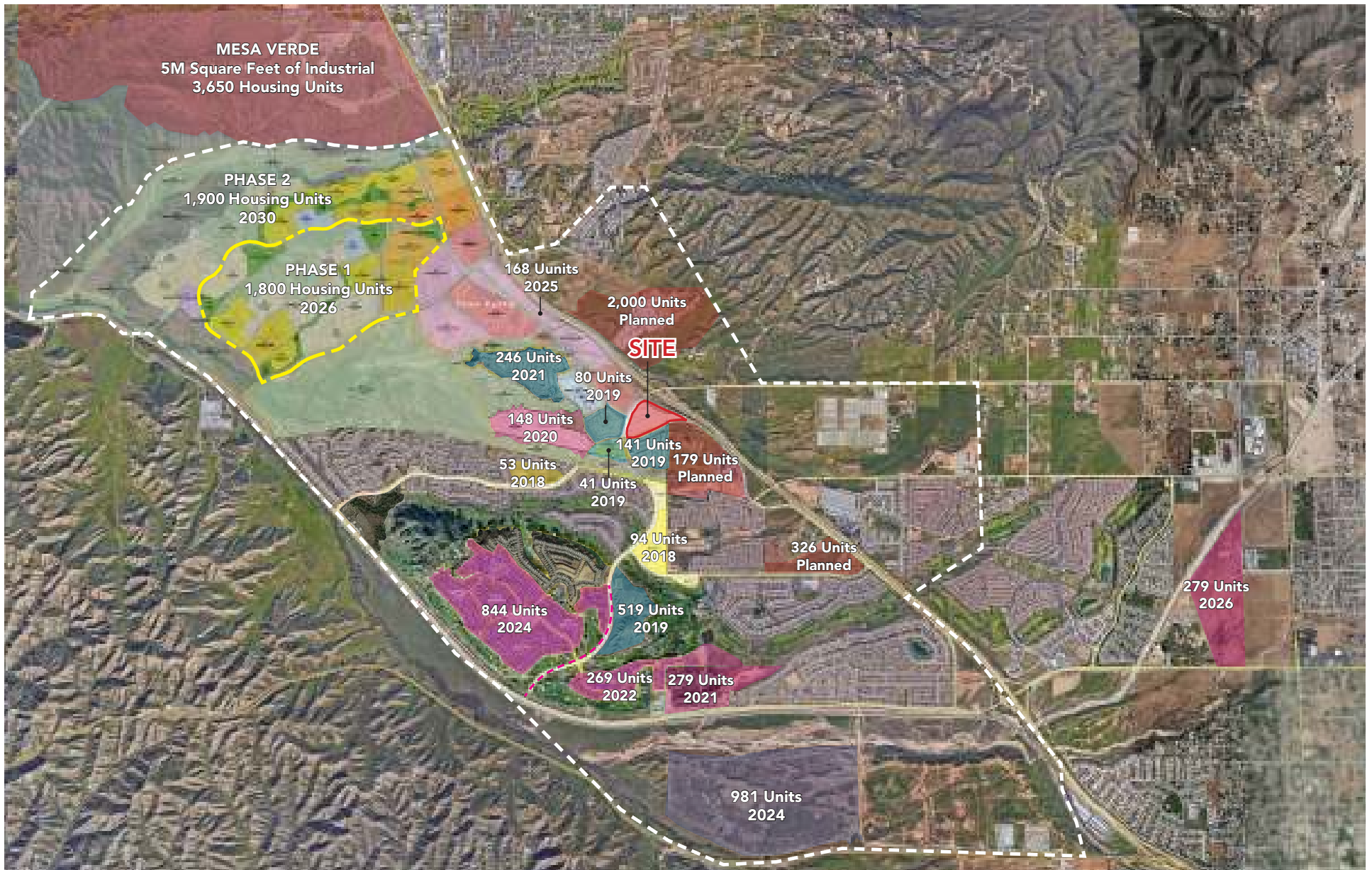


**LEWIS
RETAIL CENTERS**

THE MARKETPLACE AT CALIMESA - Calimesa, California 92223

© SRS Real Estate Partners & Lee & Associates Commercial Real Estate Services, Inc. The information presented was obtained from sources deemed reliable; however SRS Real Estate Partners & Lee & Associates Commercial Real Estate Services, Inc. does not guarantee its completeness or accuracy.

HOUSING OVERVIEW



LEWIS
RETAIL CENTERS

THE MARKETPLACE AT CALIMESA - Calimesa, California 92223

© SRS Real Estate Partners & Lee & Associates Commercial Real Estate Services, Inc. The information presented was obtained from sources deemed reliable; however SRS Real Estate Partners & Lee & Associates Commercial Real Estate Services, Inc. does not guarantee its completeness or accuracy.

EMPLOYEE DEMOS & TRAFFIC PATTERNS

